

5.8 GHz/2.4GHz/900MHz Multi-Radio Solution

The IPmesh Multi-Radio Solution can provide a complete communications network in a single unit. Featuring a fully integrated 5.8 GHz backhaul for linking multiple stations, a 2.4 GHz Wireless Access Point (54Mbps!) and a 900 MHz FHSS Telemetry Network, the IPmesh provides a comprehensive wireless solution.

5.8 GHz Backhaul

802.11 Wireless

900 MHz Telemetry

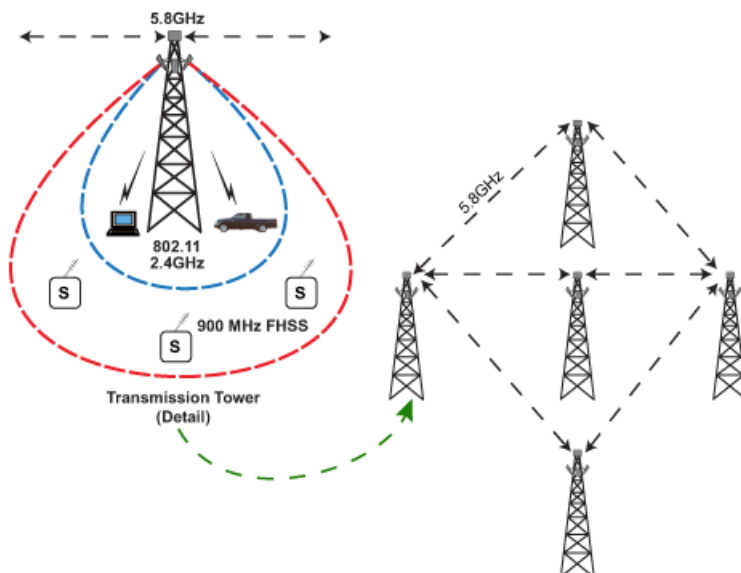
Long Range

MESH



Features

- 5.8 GHz Forward and Return Backhaul*
- 2.4 GHz Wireless Access Point*
- 900 MHz FHSS Ethernet / Serial Gateway*
- *Modular Radio Configuration
- WiMAX based TDMA mode
- Power Over Ethernet (POE)
- Weather Resistant Enclosure
- Adaptive modulation
- AP may be configured as router
- RADIUS server authentication
- Remote administration
- Mesh
- Configurable Firewall, VLAN, and VPN
- Quality of service (QoS) support
- Wireless firmware upgrade capable

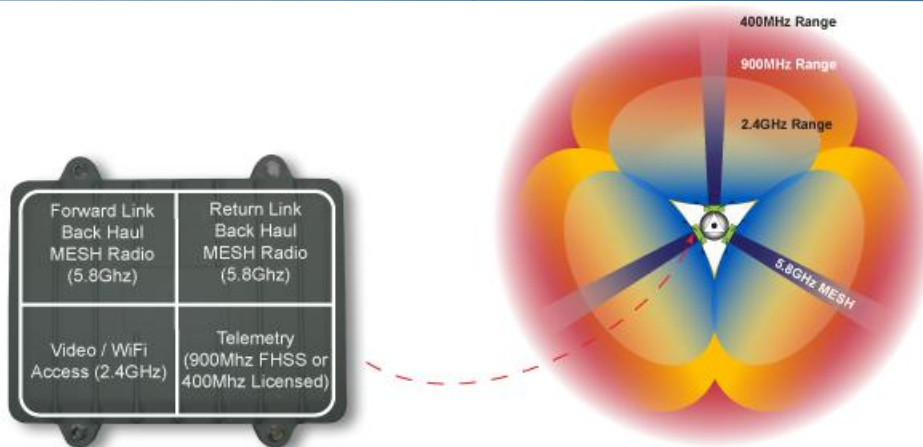


IPmesh

Specifications



Frequency 5.8 GHz Backhaul 2.4 GHz AP/Video 900 MHz Telemetry	5.8 GHz 2.4 GHz 902 - 928 MHz	Operating Modes	Access Point, Station, Repeater, Adhoc, Mesh
Spread Method 5.8 GHz Backhaul 2.4 GHz AP/Video 900 MHz Telemetry	ODFM/QPSK/16QAM/64QAM ODFM/QPSK/16QAM/64QAM FHSS / DTS	Management	Telnet, WebUI, SNMP, FTP Upgrade, RADIUS authentication
Link Rate 5.8 GHz Backhaul 2.4 GHz AP/Video 900 MHz Telemetry	Up to 54Mbps Up to 54Mbps Up to 1.2 Mbps	Network Protocols	TCP, UDP, TCP/IP, ARP, ICMP, DHCP, HTTP, SNMP, FTP, Serial over IP, QoS, VoIP
Encryption	64/128-bit WEP/WPA, WPA2 (not available for export outside Canada & USA)	Input Voltage	12-30VDC (POE)
Range	Up to 60 miles (100 km)	Connectors	Ethernet RJ-45 Antenna 4x N-Male
Sensitivity 5.8 GHz Backhaul 2.4 GHz AP/Video 900 MHz Telemetry	-94dBm @ 6Mbps -97dBm @ 6Mbps -108dBm @ 172kbps link rate	Environmental	-40°F to 167°F (-40°C to +75°C) 5-95% humidity, non-condensing
Ports LAN Ethernet	10/100BaseT IEEE802.3	Weight	Approx. 2.5kg
Network Protocols	TCP, UDP, TCP/IP, ARP, ICMP, DHCP, HTTP, SNMP, FTP, Serial over IP, QoS, VoIP	Dimensions	Approx. 305mm x 305mm x 70mm
		Approvals	FCC Part 15.247 IC RSS210
Order Options			
		-C1D2	Class 1 Div 2 (for use in hazardous environments)



Contact Information

Copyright 2010 Microhard Systems Inc.
 Specifications subject to change without notice.

Microhard Systems Inc.
 #17, 2135 - 32nd Avenue N.E.
 Calgary, AB, Canada T2E 6Z3

Email: info@microhardcorp.com
 Tel: (403) 248-0028
 Fax: (403) 248-2762



www.microhardcorp.com